



# 4G LTE Telephony Router


Voice Support for  
VoLTE/VoIP/Voicemail

TL-MR6500v



**4G** 4G(TDD&FDD)/3G  
Compatible

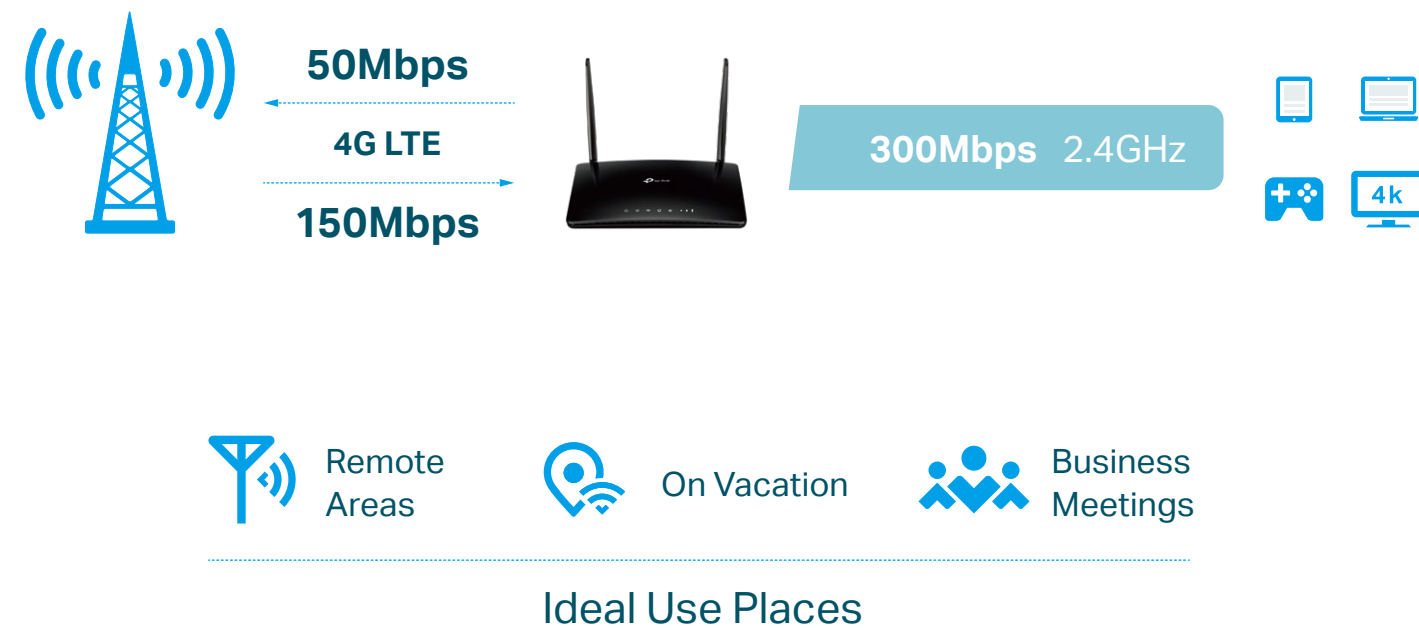
 300 Mbps  
Wireless Speed

 Qualcomm Inside for  
Better Reliability

# Highlights

## Superfast 4G LTE Speed for Reliable Wi-Fi

TL-MR6500v uses 4G LTE technology to achieve speeds of up to 150 Mbps download and 50 Mbps upload. It also shares a Wi-Fi network with maximum speed of 300 Mbps on 2.4 GHz for gaming, streaming, and more.†



## Professional Voice Functions

Make calls and surf the internet simultaneously with TL-MR6500v's VoLTE, CSFB, and VoIP functions. 50 MB of internal storage is enough space to record 100 minutes of voicemail.



# Highlights

## Designed for Maximum Network Coverage

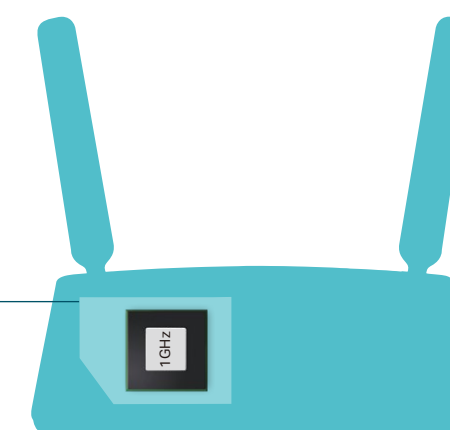
Advanced antennas establish efficient and stable connections to every device. Power Amplifier and Low Noise Amplifier boost sending and receiving capabilities, creating wide coverage for your home Wi-Fi network.



## Powerful Processor for Superior Stability

Connect up to 32 wireless devices with ease, thanks to a powerful processor that boosts data transfer speeds while ensuring dependable network stability.

**Up to  
32  
Devices**

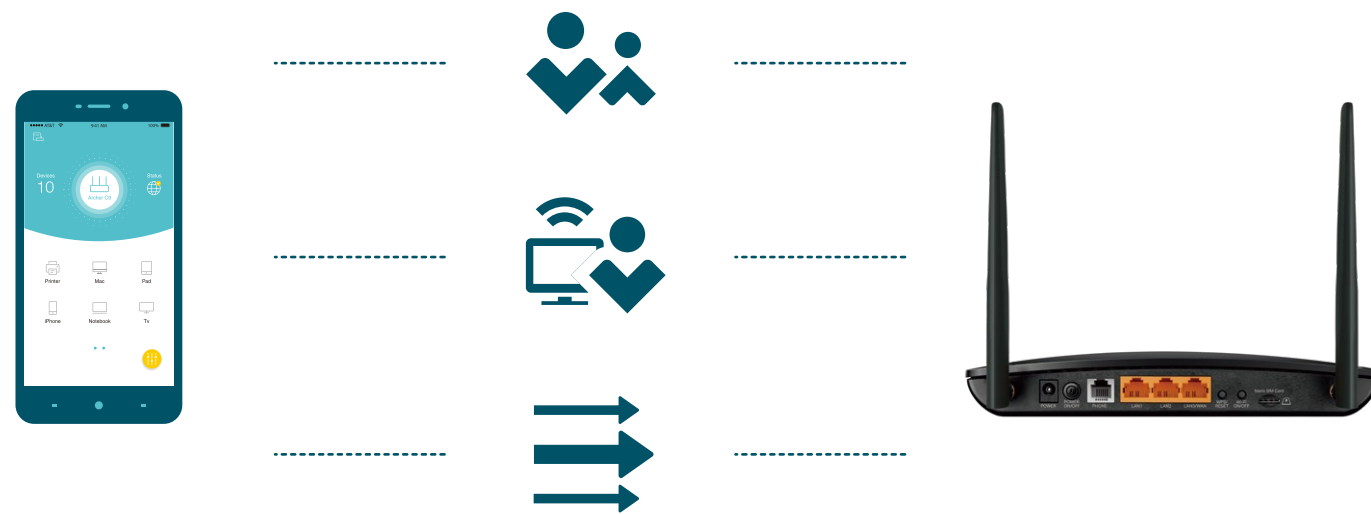


**Powerful CPU**

# Highlights

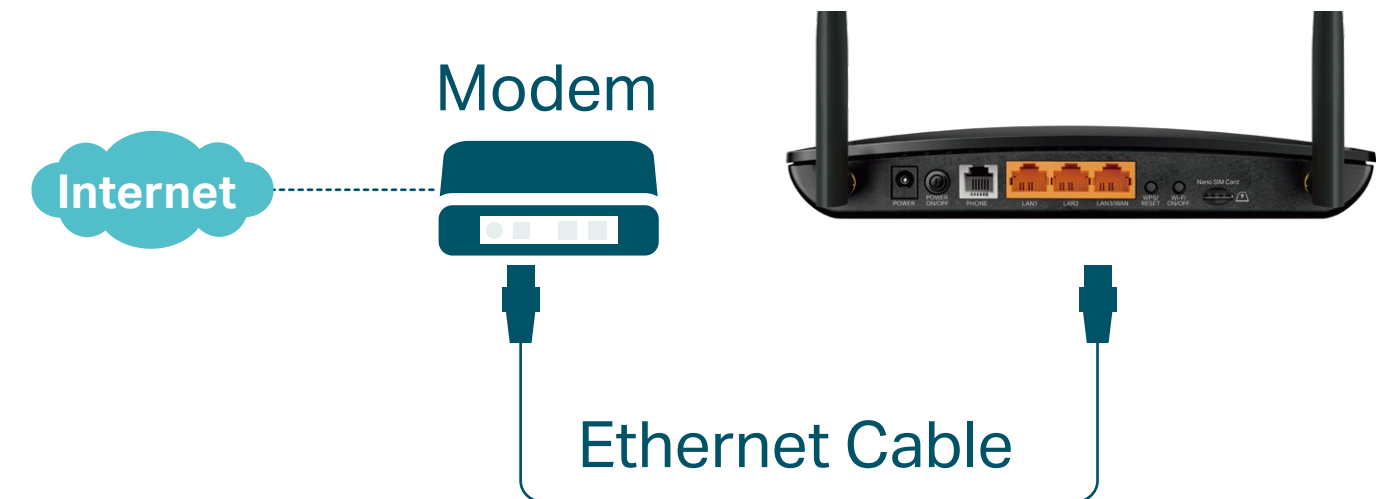
## Management Made Simple

Parental Controls let you easily manage your kids' internet use by limiting access. Guest Network secures your network by giving your visitors a separate access point to your Wi-Fi. Easily assign more bandwidth to your preferred devices with QoS.

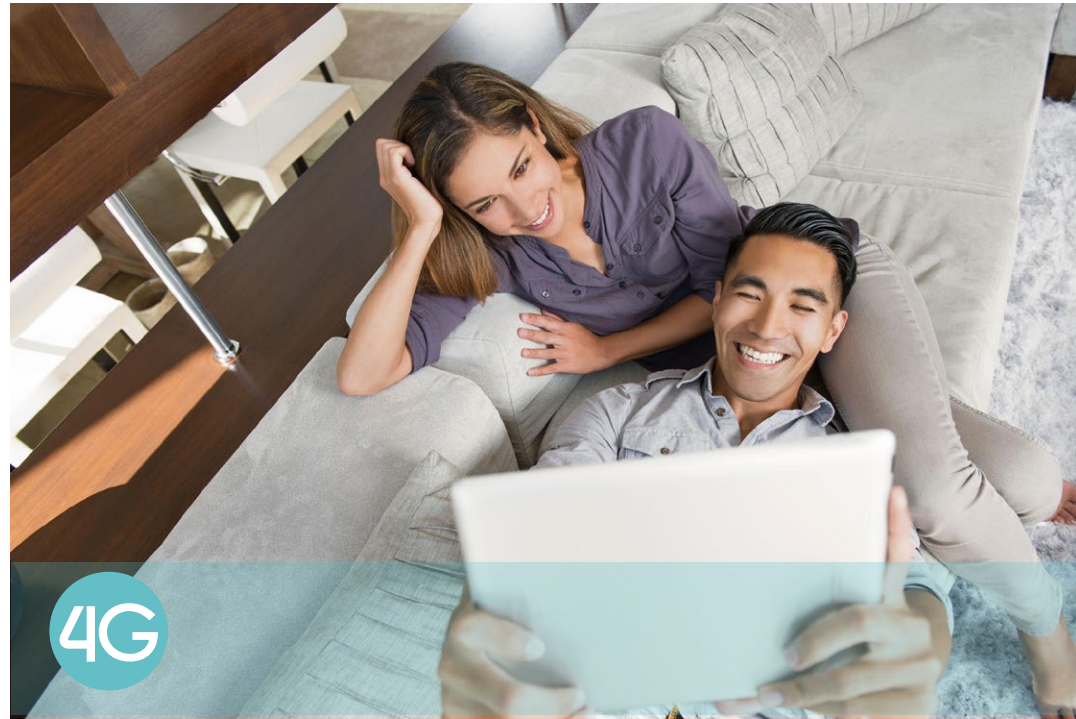


## Available WAN Connection Backup

With a fully functional WAN/LAN port, TL-MR6500v works as a router compatible with cable, fiber, and DSL modems.



# Features



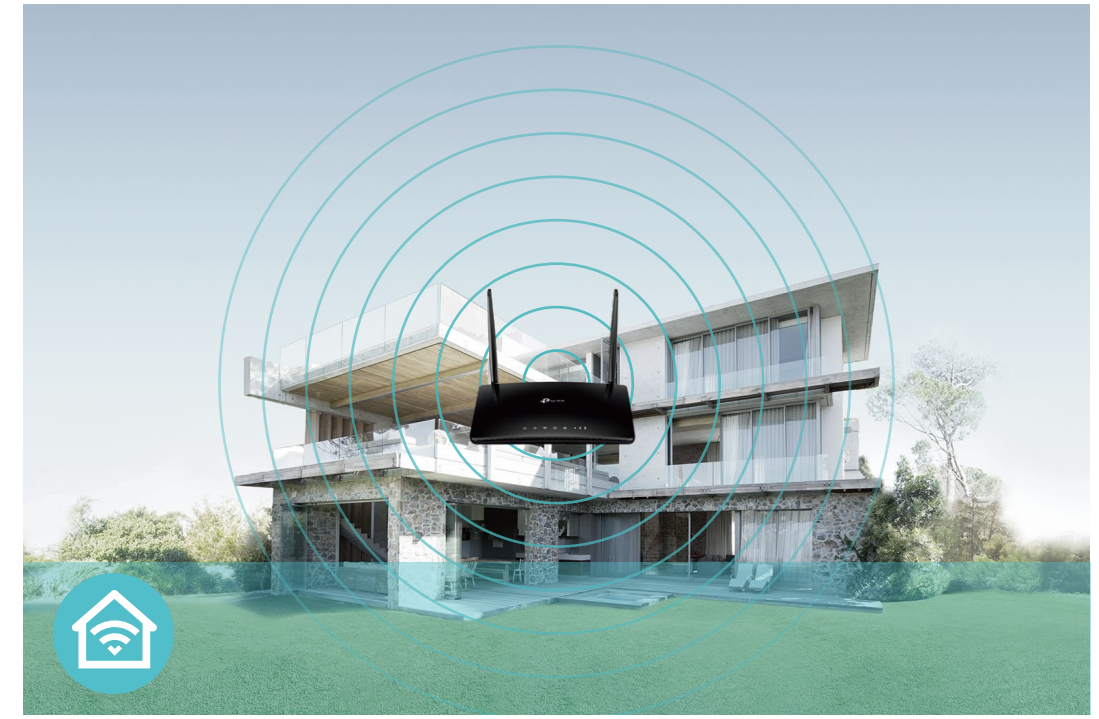
## 4G LTE

- 4G LTE – Ideal for cutting-edge 4G LTE network
- Faster Connections – Up to 150 Mbps download speed and 50 Mbps upload speed
- Backward Compatible – Compatible with 4G/3G network



## Speed

- 300 Mbps Wireless Speed – 300 Mbps Wi-Fi allows stable speed for wireless activities, such as streaming, surfing, browsing and posting social media



## Wi-Fi Range

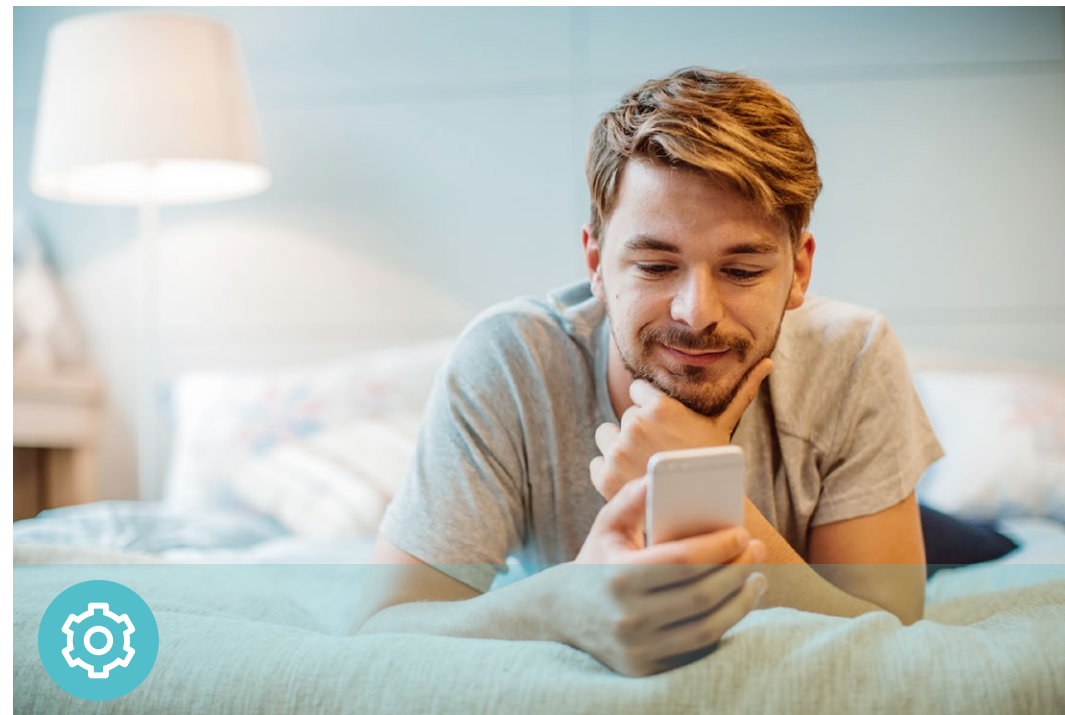
- Better Coverage – Integrated antennas provide stable wireless connections and better coverage

# Features



## Reliability

- **Easy Bandwidth Management** – Advanced QoS makes it easier for you to manage the bandwidth of connected devices
- **Superior Stability** – Powerful processor enables you to connect up to 32 wireless devices with ease



## Ease of Use

- **Intuitive Web UI** – Ensures quick and simple installation without hassle
- **Fast Encryption** – One-touch WPA wireless security encryption with the WPS button
- **Wi-Fi On/Off** – Conveniently turn on or off wireless radio as required
- **Hassle-free Management with Tether App** – Network management is made easy with the TP-Link Tether App, available on any Android and iOS device
- **Online Upgrade** – Keeps you informed of the latest firmware and allows online upgrade on the web UI



## Security

- **Guest Network** – Keeps your main network secure by creating a separate network for friends and visitors
- **Access Control** – Establishes a whitelist or blacklist to allow or restrict certain devices to access the internet
- **Parental Controls** – Restrict internet access time and contents for children devices
- **Encryptions for Secure Network** – WPA-PSK/WPA2-PSK encryptions provide active protection against security threats

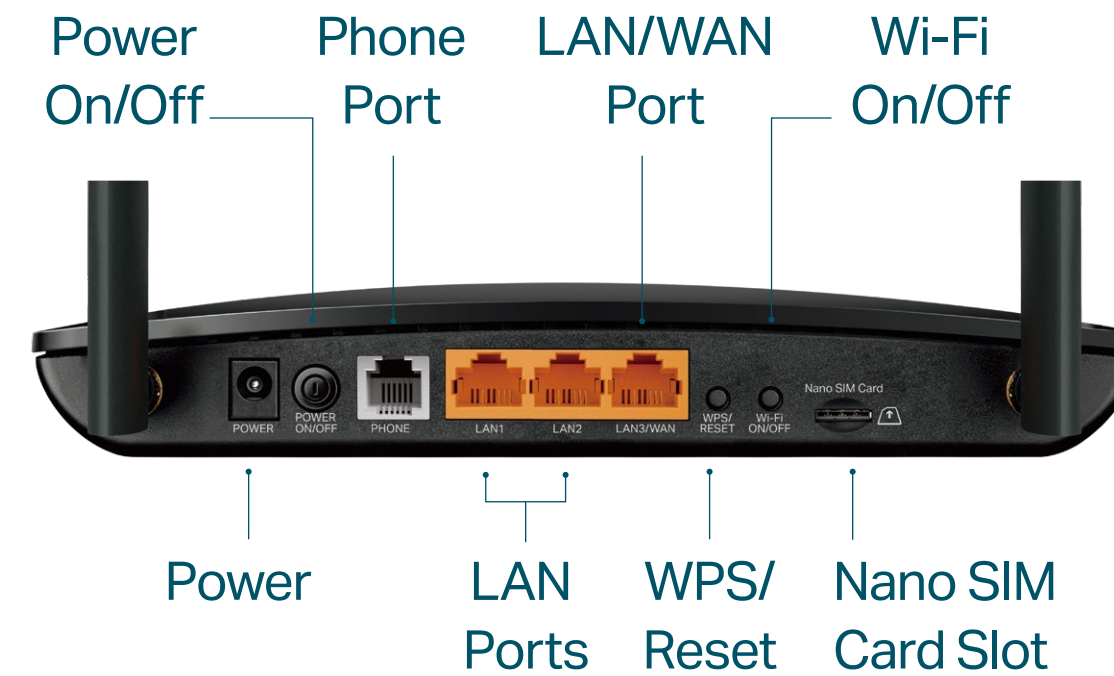
# Specifications

## Hardware

- Ports: 1× 10/100 Mbps LAN/WAN Port, 2× 10/100 Mbps LAN Ports, 1× Phone Port, 1 Nano SIM Card Slot
- Button: WPS/RESET Button, WiFi ON/OFF Button
- Antenna: 2 × Detachable External 4G LTE Antennas
- External Power Supply: 12V/1A
- Dimensions (W x D x H): 7.95 × 5.55 × 1.32 in (202 × 141 × 33.6 mm)

## Wireless

- Network Type:
  - 4G: FDD-LTE: B1/B3/B7/B8/B20 (2100/1800/2600/900/800 MHz)
    - TDD-LTE: B38/B40/B41 (2600/2300/2500 MHz)
  - 3G: DC-HSPA+/HSPA/UMTS: B1/B8 (2100/900 MHz)
- Wireless Standards: IEEE 802.11b, 802.11g, 802.11n
- Frequency: 2.4 GHz
- Signal Rate: 300 Mbps at 2.4 GHz
- CE EIRP: <20 dBm (2.4 GHz)
- Reception Sensitivity:
  - 11g 54M: -74 dBm
  - 11n HT20: -71 dBm
  - 11n HT40: -67 dBm
- Wireless Function: Enable/Disable Wireless Radio, Wireless Schedule, WMM, Wireless Statistics
- Wireless Security: 64/128-bit WEP, WPA/WPA2, WPA-PSK/WPA2-PSK encryptions



## Telephony

- VoIP Standards:
  - SIP(RFC3261)/RTP(RFC1889/3550), G.711A/u, G.729AB, G.726
- Integrated Answering Machine:
  - Stores 100 minutes long voice messages internally on the modem router.
- Advanced Telephone Functions:
  - Call Blocking, Anonymous Call Blocks, Speed Dial, Emergency Number

# Specifications

## Software

- Operation Modes: 3G/4G Router, Wireless Router
- WAN Type: Dynamic IP/Static IP/PPPoE/PPTP(Dual Access)/L2TP(Dual Access)
- DHCP: Server, Client, DHCP Client List, Address Reservation
- Quality of Service: WMM, QoS
- Port Forwarding: Virtual Server, Port Triggering, UPnP, DMZ
- Dynamic DNS: TP-Link DDNS, DynDns, NO-IP
- VPN Passthrough: PPTP, L2TP, IPsec
- VPN Server: PPTP VPN, OpenVPN
- Access Control: Parental Controls, Local Management Control, Host List, Access Control
- Firewall Security: DoS, SPI Firewall, IP and MAC Address Binding
- Protocols: IPv4, IPv6
- Management: Access Control, Local Management, Remote Management
- Guest Network: 2.4 GHz Guest Network

## Others

- Certification: CE, RoHS
- Requirements:
  - Internet Explorer 11+, Firefox 12.0+, Chrome 20.0+, Safari 4.0+, or other JavaScript-enabled browser
  - Nano SIM Card
- Environment
  - Operating Temperature: 0°C~40°C (32°F ~104°F)
  - Operating Humidity: 10%~90% non-condensing
  - Storage Humidity: 5%~90% non-condensing
- Package Contents
  - 300Mbps Wireless N 4G LTE Telephony Router TL-MR6500v
  - Power Adapter
  - RJ45 Ethernet Cable
  - RJ11 Cable
  - Quick Installation Guide
  - Telephony Feature Guide



For more information, please visit

[https://www.tp-link.com/products/details/?model=TL-MR6500v\\_V2](https://www.tp-link.com/products/details/?model=TL-MR6500v_V2)

or scan the QR code left

\*Maximum wireless signal rates are the physical rates derived from IEEE Standard 802.11 specifications. Actual wireless data throughput and wireless coverage, and quantity of connected devices are not guaranteed and will vary as a result of network conditions, client limitations, and environmental factors, including building materials, obstacles, volume and density of traffic, and client location.

Copyright ©2023 TP-Link

[www.tp-link.com](http://www.tp-link.com)

TP-Link 300Mbps Wireless N 4G LTE Telephony Router TL-MR6500v