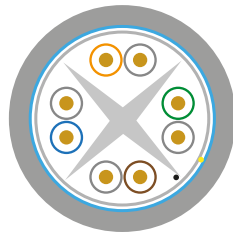
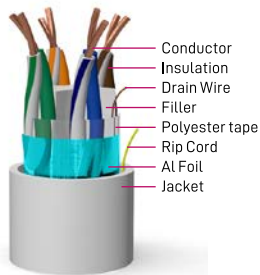
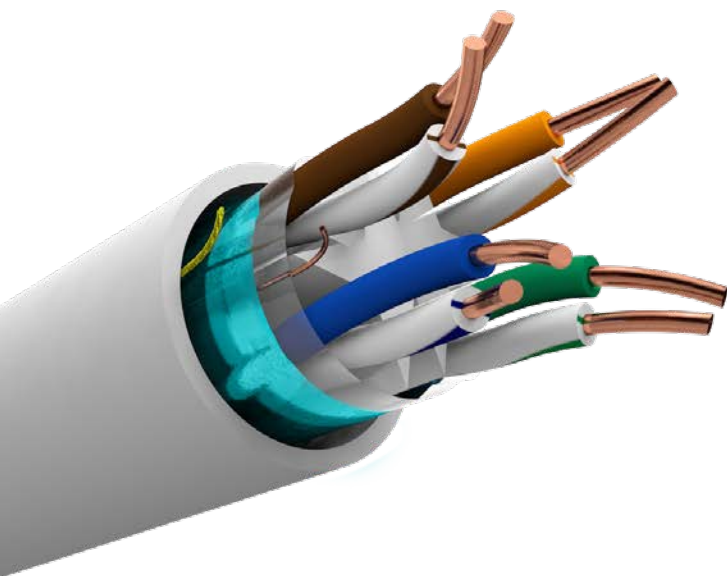


# CABLE FTP C6

CAS#LFTP-C6



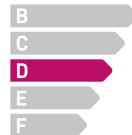
## PRODUCT DESCRIPTION

### Standard Reference:

- ISO/IEC 11801:2011
- IEC 61156-5:2012
- EN 13501-6
- EN 50173-1:2011
- EN 50173-2:2007 including amendment A1:2010
- EN 50288-9-1:2012
- EN 50288-4
- EN 50575:2014+A1:2016
- EN 60332-1[1,2], 60332-3C, 60754-[1,2], 61034-[1,2]
- ANSI/TIA-568-6-2:2009

- **Rated temperature:** 90°C
- **Installation temperature:** -30°C~+50°C
- RoHS/REACH complied
- **DoP N°:** 2658-CPR-5015\_FAM093\_04
- **Application:** VoIP, ISDN, Token, 100M TP-PDM, Analog and Data Video, TR-16 Active and Passive, 115M/662m/1.2GATM, IEEE802.3: 100Base, 100Base-T, 1GBase-T

### CRP Class:



## TECHNICAL PERFORMANCE (100m)

Frequency (MHz)	RL(dB) min.	Attenuation (dB/100m) max.	NEXT (dB/100m)	ACR (dB)
1	20.0	2.0	74.3	72.28
4.0	23.0	3.8	65.3	61.49
8.0	24.5	5.3	60.8	55.43
10.0	25.0	6.0	59.3	53.35
16.0	25.0	7.6	56.2	48.68
20.0	25.0	8.5	54.8	46.31
25.0	24.3	9.5	53.3	43.83
31.25	23.6	10.7	51.9	41.20
62.5	21.5	15.4	47.7	31.98
100	20.1	19.8	44.3	24.50
200	18.0	29.0	39.8	14.60
250	17.3	32.8	38.3	9.48

Frequency (MHz)	ELFEXT (dB/100m)	PSNEXT (dB/100m)	PSELFEXT (dB/100m)	Impedance (Ohms)
1	67.8	72.3	64.8	100±15
4	55.8	63.3	52.8	
8	49.7	58.8	46.7	
10	47.8	57.3	44.8	
16	43.7	54.2	40.7	
20	41.8	52.8	38.8	
25	39.8	41.3	36.8	
31.25	37.9	49.9	34.9	
62.5	31.9	45.4	28.9	
100	27.8	42.3	24.8	
200	21.8	37.8	18.8	
250	19.8	36.3	16.8	

## CABLE CONSTRUCTION

<b>Conductor</b>	Material	SOLID Bare Copper
	Nom.O.D (mm)	0.565±0.005mm. 23 & 24AWG
<b>Insulation</b>	Material	HPDE
<b>Insulation Diam. ø</b>		1.09 ± 0.03mm
<b>Thickness</b>		AVG: 0.30mm, MIN: 0.29mm
<b>Shielded Global. Each Pair Unshielded</b>	Polyester	Yes
	Filler	Yes
	AL Foil	Yes
	Drain Wire	Yes
	Rip Cord	Yes
<b>Jacket PE-RoHS</b>	Thickness	0.60mm ± 0.05mm - Black
	Outer Diam.ø	7.4 ± 0.40mm
	Jacket Color (standard)	White: RAL 9016 ○
<b>Code Color</b>	1 White/Blue	2 White/Orange
	3 White/Green	4 White/Brown
<b>Dimension - Weight</b>	37x37x26cm & 50x50x24 - 55Kg/Km	
<b>Packing</b>	1 Wooden Drum	
<b>Packing Length</b>	305±1.0m & 500±1.0m	

## CHARACTERISTICS

<b>Max. Conductor DC Resistance at 20°C (Ω/Km)</b>	< 93.8
<b>Rated Temperature (°C)</b>	75
<b>Rated Voltage (V)</b>	300V
<b>Velocity Ratio</b>	65%