

Mini Smart Wi-Fi Socket, Energy Monitoring

Tapo P110



Track Your Energy Use

Voice Control[^] | Set Schedules | Away Mode

works with | alexa

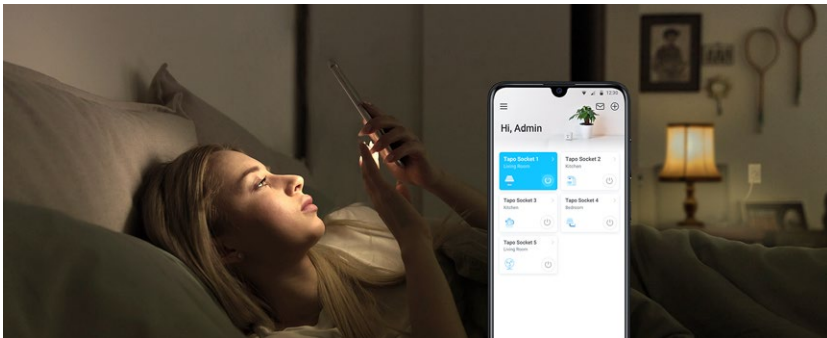
works with
Google Home



// Highlights

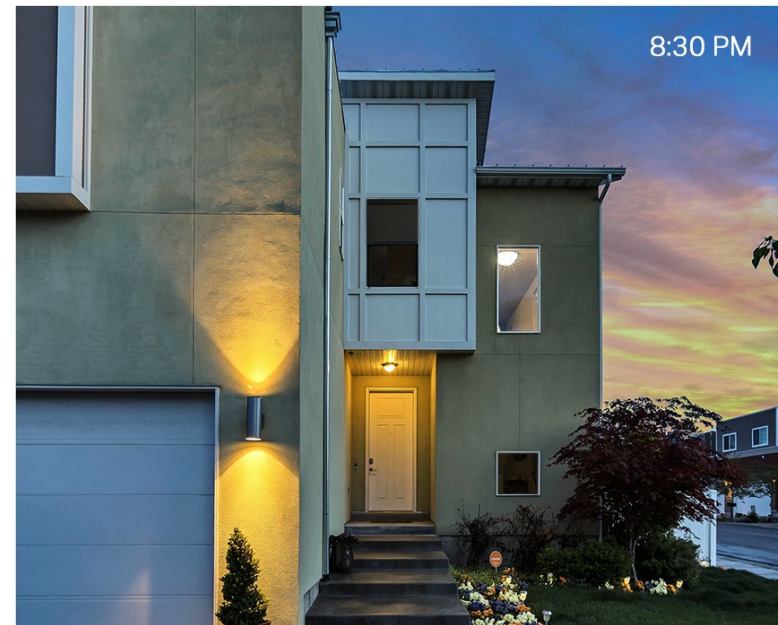
Energy Monitoring

Offers more comprehensive insights into home appliances' power consumption with more intuitive and straightforward data visualizations. Set your electricity rate to estimate your energy bills. 4 safety protection ensures your household's safety.



Remote Control from Anywhere

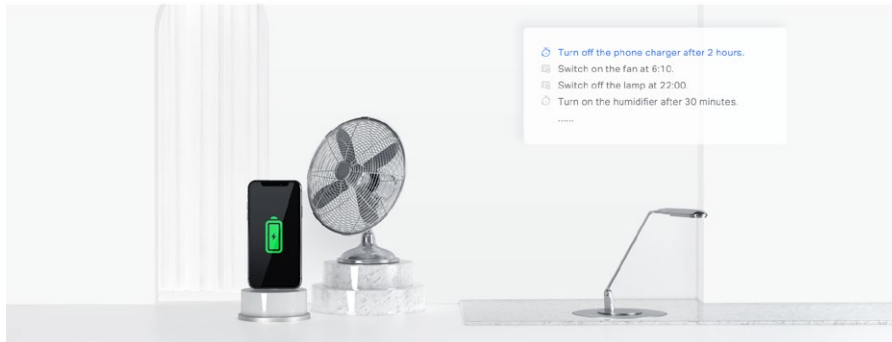
Instantly turn connected devices on/off wherever you are via the Tapo app. Designed to facilitate your life and help eliminate potential safety hazards.



// Highlights

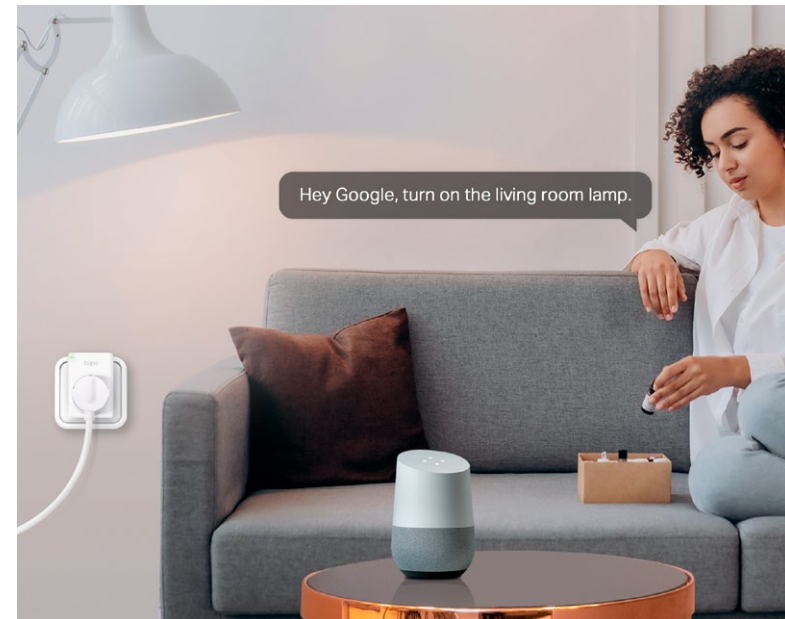
Live Smarter by Presetting Time

Schedule and Timer features allow you to create weekly schedule and countdown plans. All of your connected electronics will automatically work at your preset time, making your life smart, convenient, and energy-saving.



Free Up Your Hands with Voice Control

Free up your hands by using simple voice commands with Alexa, Siri®, or Google Assistant.



// Features

- **Energy Monitoring** – Offers insights into home appliances' power consumption with data visualizations; estimates your energy bills; ensures your household's safety with 4 safety protection.
- **Remote Control** – Instantly turn connected devices on/off wherever you are through the Tapo app.
- **Schedule** – Preset a schedule to automatically manage devices.
- **Timer** - Create a countdown timer for connected appliances.
- **Voice Control** – Manage your smart plug with voice commands via compatible voice Assistants.
- **Compact Design** - Mini-sized to avoid blocking adjacent sockets.
- **Device Sharing** - Easily share management permissions with each member of your family.
- **Flame-Retardant*** - PC flame-retardant materials help minimize burning hazards.

// Specifications

General

- LED&Button: Status LED, Power Button
- Material:
Shell: V-0(UL-94) Flame retardant PC
Socket: Phosphorus-copper
Plug: Nickel-plated copper
- Voltage: 100-240 V~, 50/60 Hz
- Max Load[†]: 16 A, 3,680 W (General Use/Resistive Load), 1/6 HP Motor
- Protocols: IEEE 802.11b/g/n, 2.4 GHz Wi-Fi
- Dimensions: 72 * 51 * 40 mm

Wireless

- Wireless Standards: IEEE 802.11b, 802.11g, 802.11n
- Frequency: 2.400-2.4835 GHz
- Signal Rate: 72Mbps at 2.4 GHz
- Transmit Power: <20dBm (EIRP)
- Wireless Function: Wireless Client
- Wireless Security: No Security; WEP; WPA-PSK; WPA2-PSK; WPA3

Others

- Package Contents:
Mini Smart Wi-Fi Socket Tapo P110
Quick Start Guide
- Certifications: CE, RoHS
- Operating Temperature: 0 °C–40 °C
- Operating Humidity: 10%–90%RH, Non-condensing

[^]Voice control is only supported with certain voice assistants.

[†]The total power of the connected electrical equipment should not exceed the max load current, and maximum power supported varies based on the appliance. Please do not use in damp environments or outdoors. For more information, please visit <https://www.tapo.com/>

Specifications are subject to change without notice. All brands and product names are trademarks or registered trademarks of their respective holders.

©2023 TP-Link